



WGM GROUP
WWW.WGMGROUP.COM

PRELIMINARY

PLOTTED: 2/7/24
SAVED: 2/7/24

UNIT LAYOUT - CROSS SECTIONS
LOT M3, MISSOULA MEADOWLANDS, PHASE III
MISSOULA COUNTY, MONTANA

REVISIONS:
NO. DESCRIPTION DATE

NO.	DESCRIPTION	DATE

PROJECT: 20-10-02.2
LAYOUT: SHT1
SURVEYED: ---
DESIGN: ---
DRAFT: CEG
APPROVE: DH
DATE:

FEBRUARY 2024

SHEET 1 OF 2

LOT/ UNIT TOTALS:

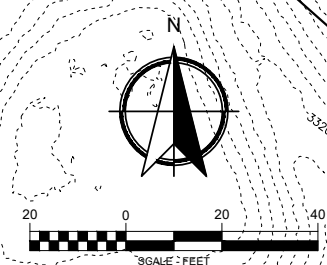
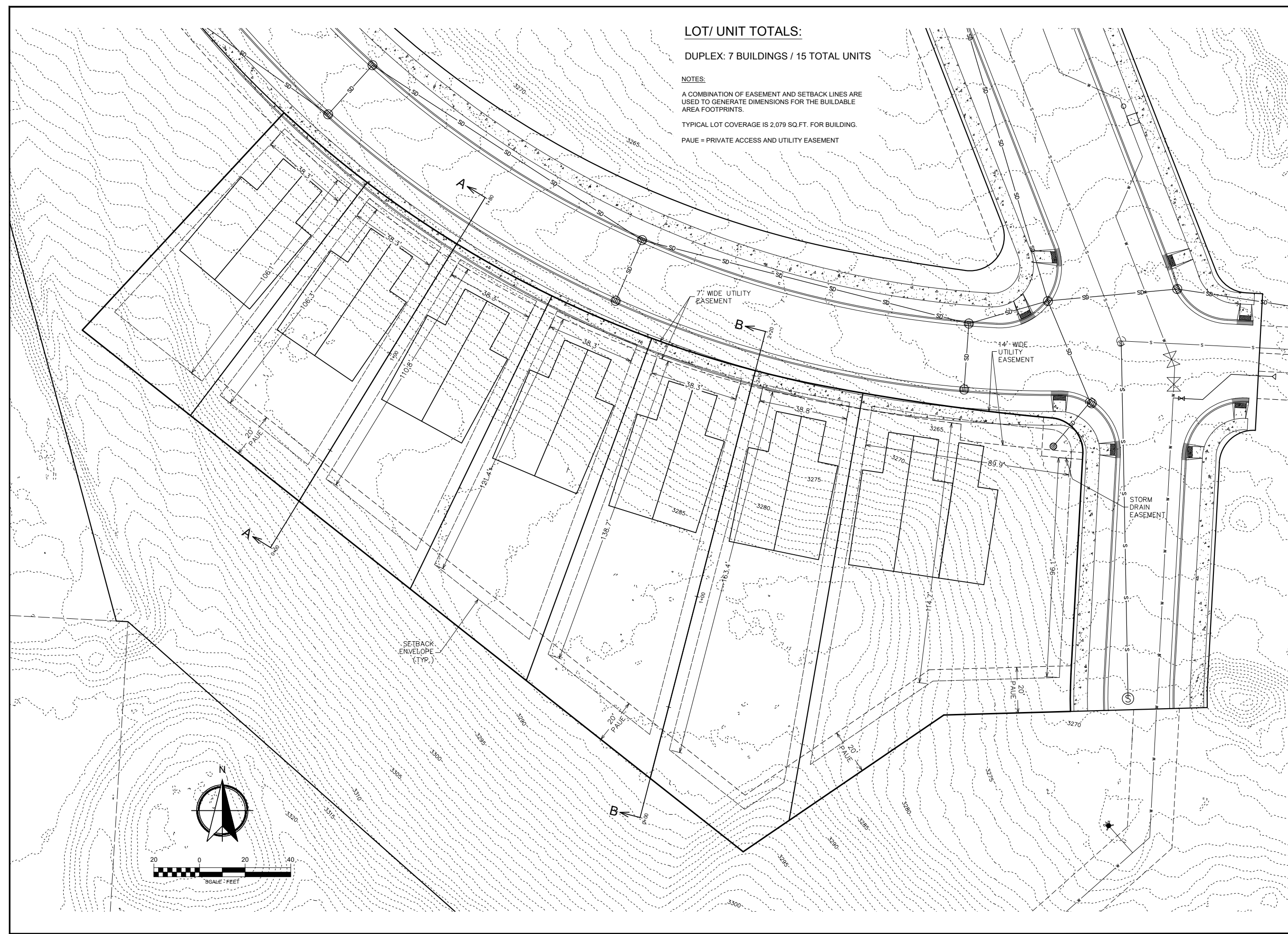
DUPLEX: 7 BUILDINGS / 15 TOTAL UNITS

NOTES:

A COMBINATION OF EASEMENT AND SETBACK LINES ARE USED TO GENERATE DIMENSIONS FOR THE BUILDABLE AREA FOOTPRINTS.

TYPICAL LOT COVERAGE IS 2,079 SQ.FT. FOR BUILDING.

PAUE = PRIVATE ACCESS AND UTILITY EASEMENT



FILE: W:\Projects\201002\CAD Data\Exhibits\201002.2_Layout-M3-xsec.dwg

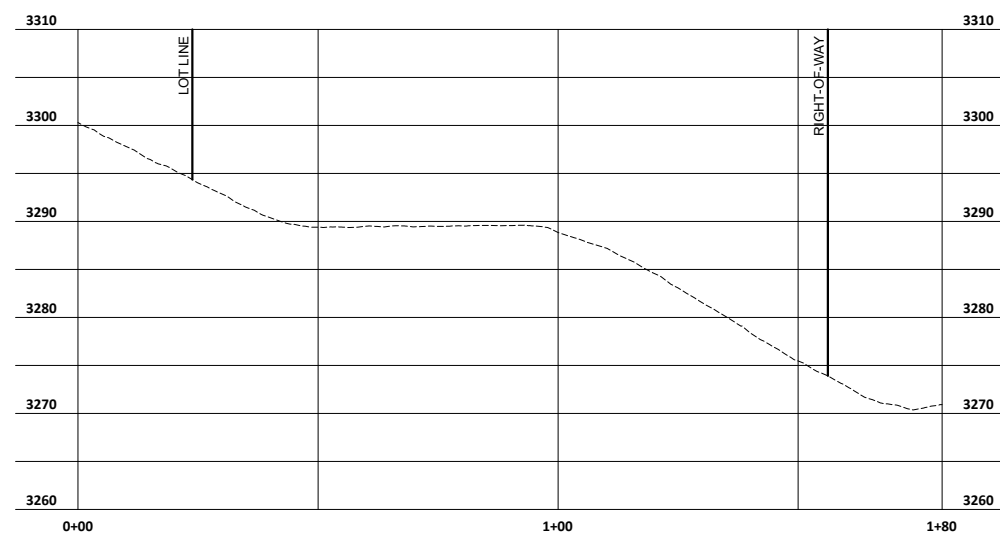


WGM GROUP
WWW.WMGROUP.COM

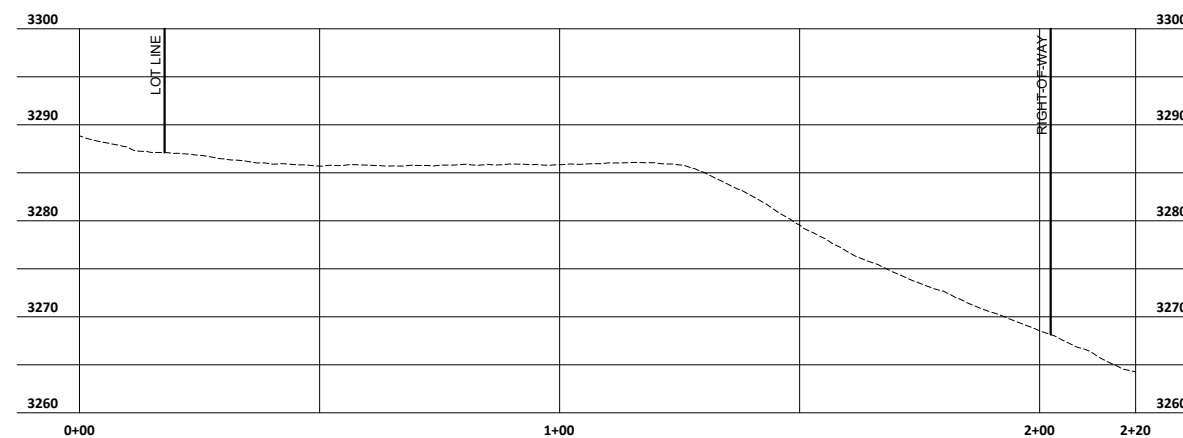
PRELIMINARY

PLOTTED: 2/7/24
SAVED: 2/7/24

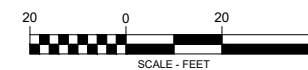
UNIT LAYOUT - CROSS SECTIONS
LOT M3, MISSOULA MEADOWLANDS, PHASE III
MISSOULA COUNTY, MONTANA



CROSS SECTION A-A



CROSS SECTION B-B



NO.	DESCRIPTION	DATE

PROJECT: 20-10-02.2
LAYOUT: SHT2
SURVEYED: ---
DESIGN: ---
DRAFT: CEG
APPROVE: DH
DATE:

FEBRUARY 2024